

SLIT LAMP MICROSCOPE



SwiVi L-0300



www.inami.co.jp/en



www.facebook.com/inami.japan

Clearer vision.

More stress-free eye examination.

✓ **High resolution image performance**

Approximately 20% increase in illuminance compared to previous models (inter company's comparison)

✓ **Real Color**

Inovative design with new filter

✓ **Friendly illumination design**

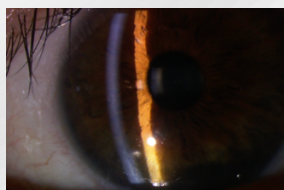
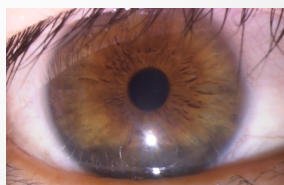
Designed to reduce harmful rays

✓ **Smooth operation**

More stability operation by LM guide

✓ **Using LEDs**

High reliability with long-life LEDs



*Observation image

SwiVi
L-0300

The Ideal Slit Lamp Enabled by Next-Generation LEDs

By combining proprietary optical technology with high-quality LEDs, we have achieved a sharp, uniform slit light. Illuminance has been improved by approximately 20% compared to previous models (inter company's comparison), contributing to better visibility during examination.

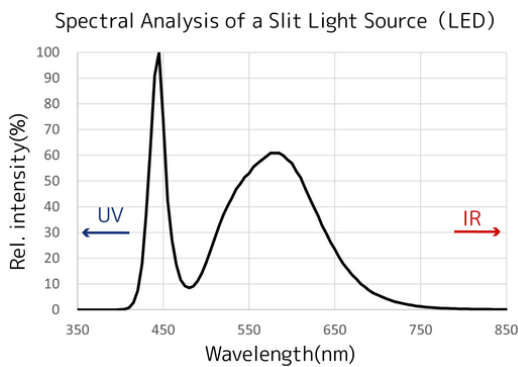
Furthermore, the design prioritizes color reproduction, allowing for the observation of eye tones in a manner that closely resembles natural appearance.

Additionally, the device is equipped with our proprietary Warm White filter, providing a soft and soothing white light environment. As a result, it is expected to assist in observations during daily clinical practice.

Safety is a priority alongside performance. The design aims to reduce harmful radiation, helping to minimize the burden on patients.

Furthermore, the long lifespan of the LEDs is expected to reduce the administrative burden of managing spare bulbs and the need for sudden replacements during treatment.

We offer lighting that brings reliable visibility and comfort to your daily clinical environment.



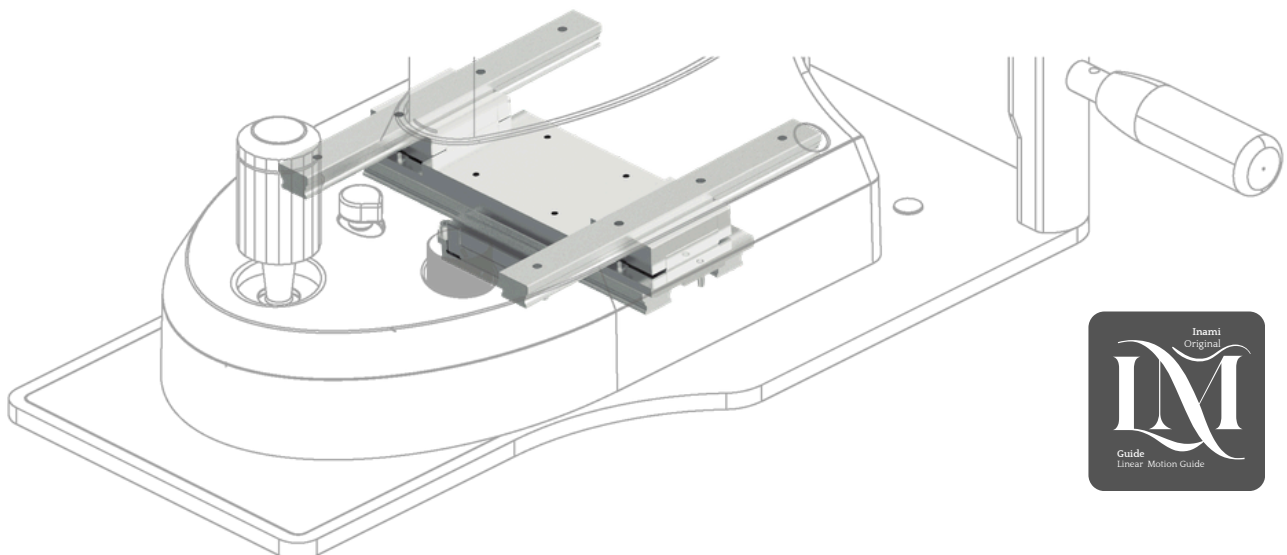
SwiVi aimed to create a user experience that feels as natural as an extension of the body

By adopting LM guides that ensure high-precision straight-line movement, we have significantly improved the smooth operation of the unit.

It achieves a high level of balance between robustness, durability, quiet operation, and lightweight design, enabling stable operation even during cross-directional movement.

Conventional slit lamps, with their three-point support structure, were prone to operational issues caused by wear on the rails and pulleys.

SwiVi resolves these issues through the use of LM guides, delivering smooth operation with superior stability.





Joystick with electric height adjustment

Smooth motorized height adjustment is possible with just a twist of the joystick.

You can intuitively adjust the height as part of the natural flow of operations.

It also retains the traditional switch functions and can be used as a camera shutter.

This single control system achieves greater operational efficiency.

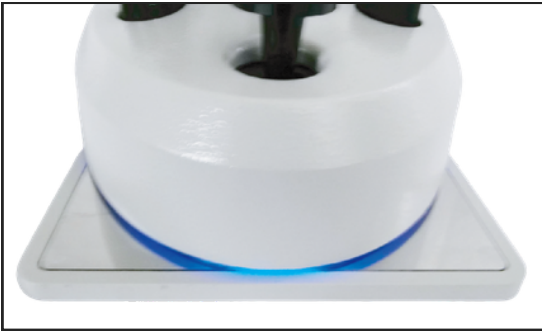


The sense of stability provided by the panel-mounted design

The lower section of the joystick features a ball-and-socket design, enabling stable, precise micro-movements and supporting precise positioning.

Additionally, the LM guide minimizes the impact of the unit's weight on the joystick, ensuring smooth operation and exceptional durability.

Furthermore, the reliable 90-degree locking mechanism and stainless steel contact surfaces reduce wear and tear, maintaining stable performance over the long term.



“Power On” indicated by a blue light—visible at a glance

The blue LED, which illuminated of the slit is now clearly visible at a glance from the operator's side.

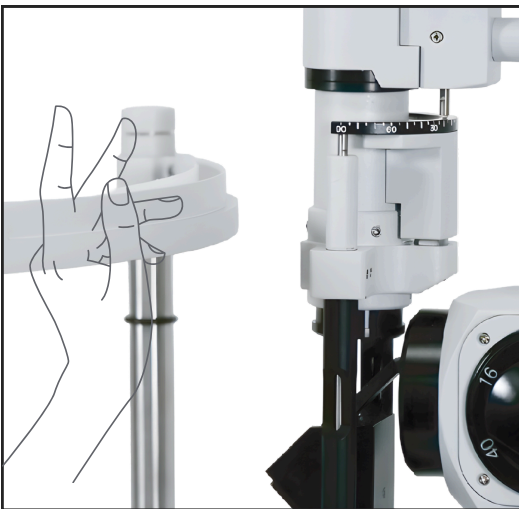


Features a cable storage design that supports smooth operation

During frequent slit adjustments in the course of an examination, cable interference not only hinders operation but also increases the risk of equipment wear and cable breakage.

To address this issue, we have evolved the design to feature a mechanism that retracts the cable internally in sync with the arm's movement.

This smooth, snag-free movement allows you to keep your focus on the patient without disrupting the flow of the examination, fostering deeper communication and a greater sense of reassurance.



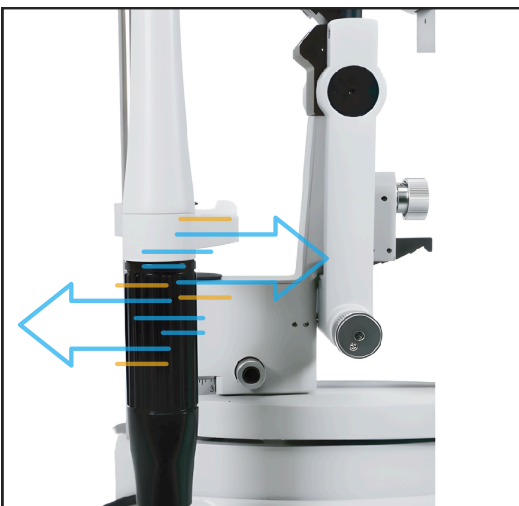
Functional brow guard design

The forehead protector features a space for resting doctor's hands.

This helps minimize slight movements during examinations and supports precise manipulation.

Additionally, the fixation light can be attached or removed with a single touch, allowing for quick customization to suit your examination style.

*The fixation light is an optional accessory.



Adjusting the chin rest up and down faster

The newly designed spindle delivers twice the range of motion of conventional models with just a single action.

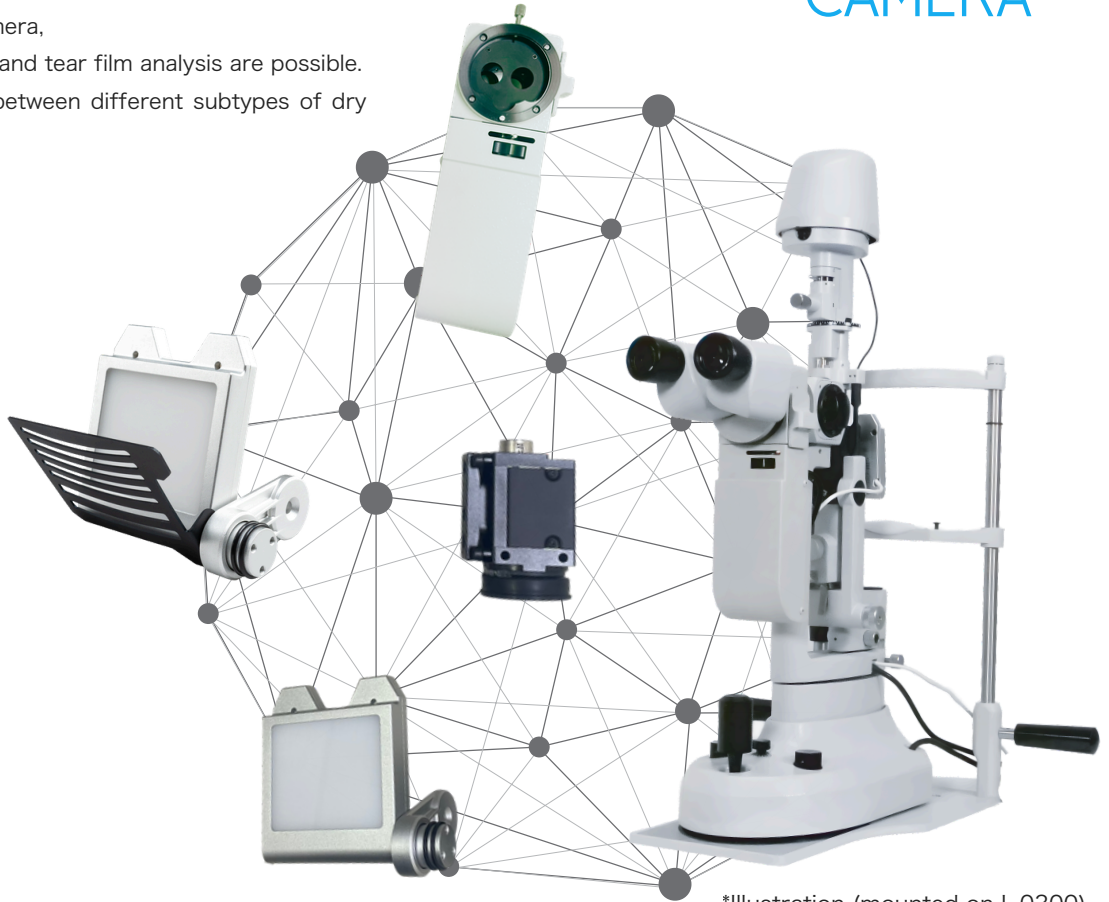
By eliminating unnecessary movement, it provides a stress-free operation.

0 0 5 DRY EYE CAMERA

Expand your horizons with a dry eye camera.
Enjoy greater freedom in your examination style.



For connecting a dry eye camera, high-resolution meibography and tear film analysis are possible. This helps in distinguishing between different subtypes of dry eye.



*Illustration (mounted on L-0300)

*Note: To use the dry eye camera, you must install the dedicated bundled software on your PC. (PC is not included.)



All takes just a few seconds.
Take it out, snap a photo,
put it back.

The dry eye camera allows for immediate imaging whenever needed.

The lighting system activates with a single motion and can be stowed away at the bottom after use, allowing you to quickly resume standard slit-lamp examination.



During tear meniscus interferometric imaging



Image: Full version of the dry eye camera is installed



Image: Basic version of dry eye camera is installed

006 DRY EYE CAMERA

Now you can perform detailed tear film examinations using your standard slit lamp.

- ✔ Supports the identification of dry eye subtypes through tear film analysis
- ✔ Achieving convincing results through quantitative evaluation
- ✔ It is capable of performing its sole function: oil layer quantification (LLT)
- ✔ Equipped with high-resolution meibography
- ✔ Features an ocular surface scale

Equipped with a scaling function that allows measurement of length, angle, area, and other parameters at any point on the facial surface.

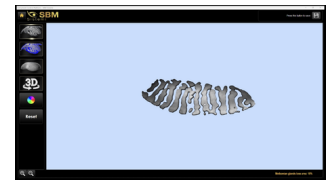
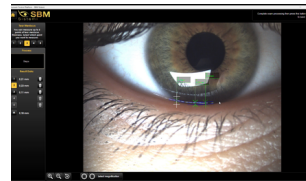
Effective for providing highly convincing information, such as quantitative assessments of objective parameters of lesions, postoperative comparisons, severity evaluations, and morphological changes.

Examples: pterygium, palpebral fissure width, inflammation, erosion, tumors, etc.



Complex tear film conditions are scored from multiple perspectives. Reports can be presented immediately during the examination, enabling you to simultaneously improve both the quality and speed of the informed consent process.

 AUTO INTERFEROMETRY Automatic measurement of the tear film oil layer thickness (LLT) using optical interference	 TEAR MENISCUS Automatic measurement of the depth of the tear meniscus	 MEIBOGRAPHY High-resolution infrared imaging of the Meibomian glands	 BLEPHARITIS High-magnification imaging of embolization and vasodilation	 BLINK QUALITY Evaluating blinking by measuring incomplete blinks
---	---	--	---	--



FUNCTIONS		
Name	L-0541DR-F Dry eye camera full	L-0541DR-B Dry eye camera basic
Model	L-0541DR-F	L-0541DR-B
Automatic Interferometry	●	—
Interferometry	●	●
Tear Meniscus Measurement	●	●
Blinking Quality	●	—
Meibography (Measurement of Atrophy Areas)	●	●
3D Meibography	●	—
Blepharitis	●	●
Generate various reports	●	●

007 OPTIONAL ACCESSORIES

IMAGING



■ C-mount 37 mm
LC-100-37



■ C-mount (f=70)
L-0554



■ Beam Splitter Device
L-0541-0

OTHER



■ Applanation tonometer
L-5110



■ Fixation target
L-02

008 TECHNICAL DATA

Name	LED Slit Lamp SwiVi	
Model	L-0300	
Microscope	Magnification Changer	5 steps by drum rotation
	Eyepiece	12.5x
	Magnification Ratio	6.4x · 10x · 16x · 25x · 40x
Slit Illumination	Slit Width	0-12mm
	Slit Rotation	±90°
	Filters	Cobalt blue, Warm white, Red-free, 50%ND
	Light source	LED (300kLux)
Background Illumination	Light source	LED
Base (Operating Range)	Vertical Movement	25mm
	Longitudinal Movement	100mm
	Lateral Movement	100mm
	Fine base movement	10 mm radius; joystick control
Chinrest	Vertical Movement	72mm
Size & Weight	Dimension	390(W) × 390(D) × 665(H)
	Weight (Slit Lamp only)	18kg
Power supply	Input Voltage	AC100-240V
	Power Consumption	75VA

Inami & Co., Ltd.

No.24-2, Hongo 3-chome, Bunkyo-ku,
Tokyo 113-003, Japan
Tel: +81-3-3814-5916 Fax: +81-3-5684-2126
E-mail: corpinfo@inami.co.jp



202604/V2.0